

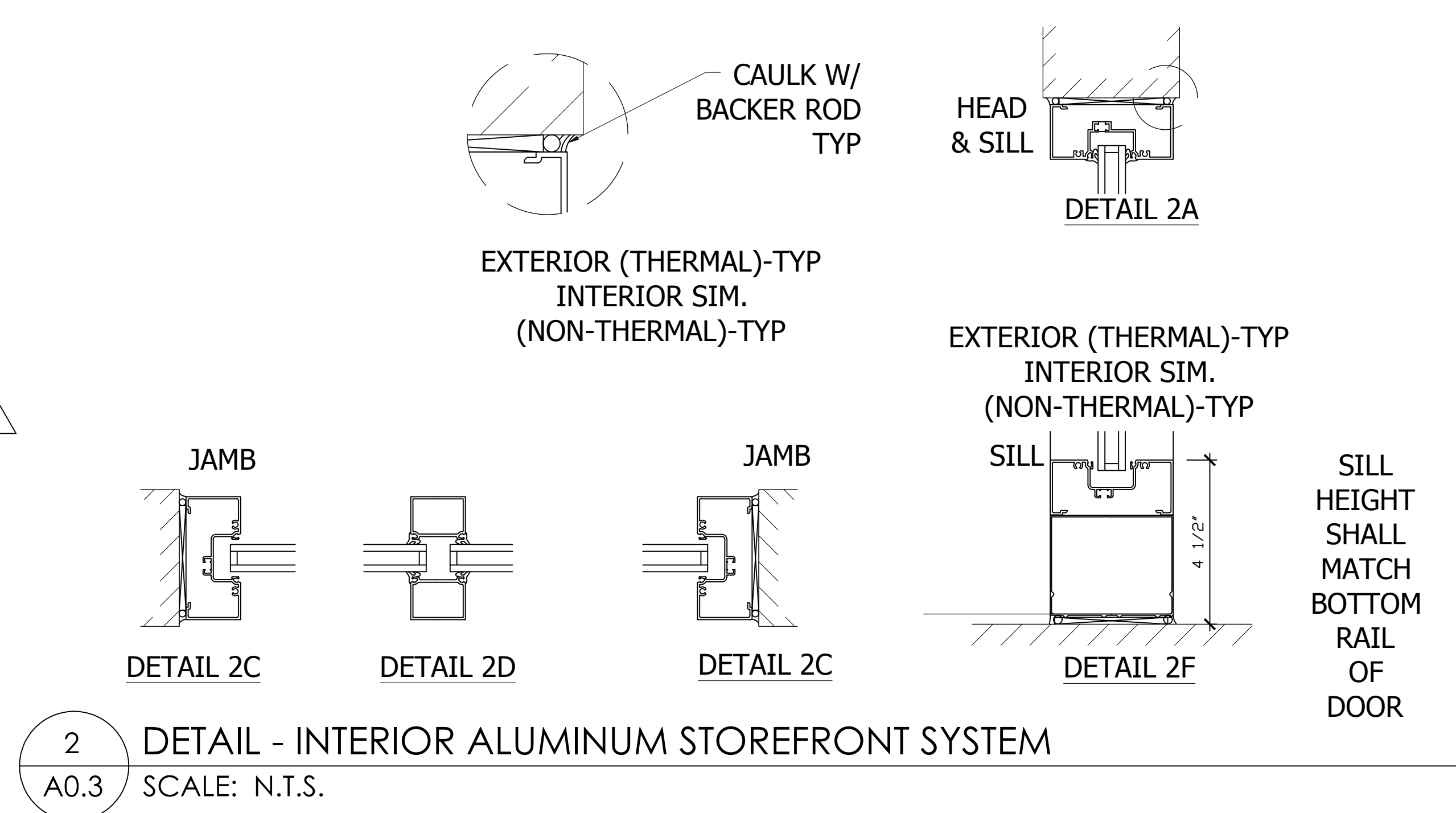
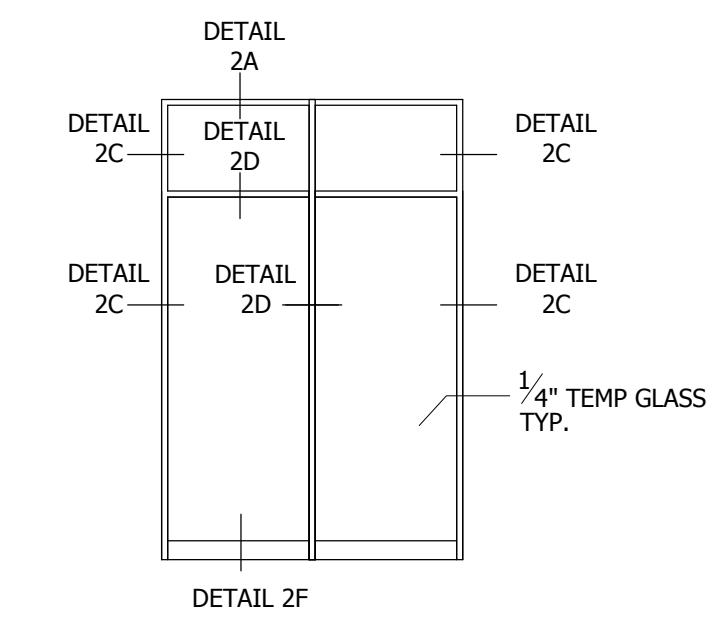
**DOOR NOTES**

1. PROVIDE SILENCERS AT ALL DOOR FRAMES.
2. "EXIST'G" INDICATES EXISTING DOOR OR FRAME AND/OR EXISTING DOOR WIDTH OR HEIGHT.
3. THE COLOR OF PAINTED DOORS AND FRAMES SHALL MATCH ADJACENT WALL SURFACES, UNLESS OTHERWISE NOTED.
4. ALL LOCKSETS SHALL HAVE INTERCHANGEABLE CORES THAT SHALL BE REVIEWED WITH THE CLIENT AND THE LANDLORD PRIOR TO FABRICATION AND INSTALLATION. COORDINATE KEYING REQUIREMENTS WITH OWNER.
5. PROVIDE METAL BACKING PLATES AT ALL DOOR FRAMES FOR HINGES, CLOSERS, ELECTRIC STRIKES, AND ALL OTHER HARDWARE AS REQUIRED.
6. PROVIDE A STRIKE BOX AT ALL DOOR STRIKES.
7. THE CONTRACTOR SHALL COORDINATE ALL KEYING AND KEY FOB PROGRAMMING REQUIREMENTS WITH THE OWNER, PRIOR TO THE FABRICATION AND INSTALLATION OF DOORS AND FRAMES.
8. DOORS WITH KEY FOB SHALL HAVE FAIL-SECURE FEATURE CONNECTED TO BUILDING EMERGENCY SYSTEM.
9. ALL CLOSERS SHALL BE ADJUSTED SO THAT THE MAXIMUM OPENING AND CLOSING FORCE IS 5 LBF. THE SWEEP PERIOD OF CLOSERS SHALL COMPLY WITH THE APPLICABLE ACCESSIBILITY CODES AND THE AMERICANS WITH DISABILITIES ACT (ADA).
10. REFER TO SECURITY DRAWINGS PREPARED BY OWNER'S SECURITY CONSULTANT FOR ADDITIONAL INFORMATION AND REQUIREMENTS, SUCH AS, DOOR CONTACTS, DOOR RELEASE BUTTONS, INFRARED SENSORS, ETC.
11. PROVIDE FACE COVER PLATES FOR ALL OUTSWINGING DOORS WITH ELECTRIC STRIKES.
12. PROVIDE DOOR CLOSERS FOR ALL DOORS DESIGNATED TO RECEIVE ELECTRIC STRIKES, ELECTRO-MAGNETIC LOCKS OR MAGNETIC CONTACT SENSORS.
13. PREPARE ALL DOORS AND FRAMES TO RECEIVE ALL REQUIRED DOOR HARDWARE AND SECURITY ITEMS. SECURITY REQUIREMENTS TO BE DEFINED BY OWNER.
14. COORDINATE EXACT LOCATION OF ALL KEY FOBS, DOOR RELEASE BUTTONS, AND EMERGENCY OVERRIDE BUTTONS WITH ARCHITECT PRIOR TO INSTALLATION OF DEVICES AND CORRESPONDING WIRING.
15. ALL WOOD DOORS SHALL BE SOLID CORE FSC CONSTRUCTED DOORS WITH NO ADDED UREA FORMALDEHYDE
16. ALL HARDWARE TO BE US26D UNLESS NOTED OTHERWISE
17. EXISTING DOOR TO REMAIN, REPLACE EXISTING MORTISE LOCKS AND KNOB HANDLES WITH NEW LEVER HANDLES TO MATCH LOCK FUNCTION OF EXISTING. NEW ADA LEVER DESIGN TO MEET ANSI/BHMA A156.3. DOORS LEADING TO HAZARDOUS AREAS COMPLY WITH REQUIREMENTS OF (IAC) 400.310(J), & CBC 18-11-1108.5 & HAVE KNURLED TACTILE WARNING ON OPERATING HARDWARE.
18. ALL LOCKING DOOR HARDWARE TO BE KEYLESS IN THE DIRECTION OF EXIT. ALL EXIT DOORS MUST BE OPERABLE FROM INSIDE WITHOUT A KEY OR SPECIAL KNOWLEDGE.

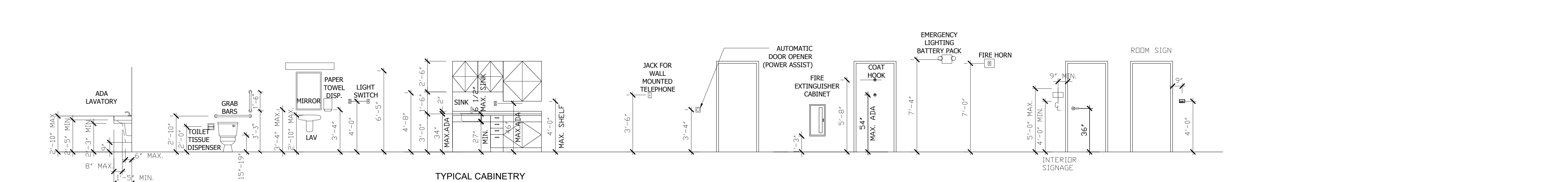
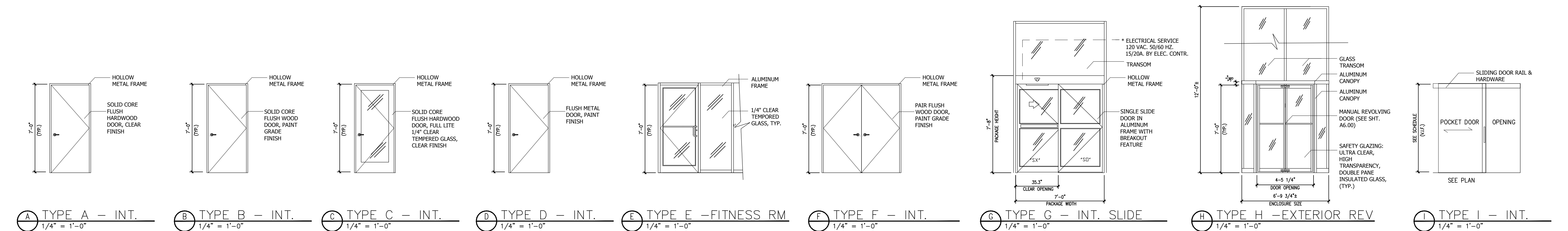
**DOOR AND FRAME SCHEDULE**

LOCATION	DOOR			FRAME			DETAILS			Fire Rating (Minutes)	Hardware Set No.	REMARKS		
	Room Name	Number	Type	Material	Finish	W	H	TH	Material				Type	Head
ENTRY LOBBY	01	H	AL/GL	-	6'-6"	7'-0"	-	AL	CLEAR ANOD	-	-	-	-	REVOLVING W/ OVERHEAD SPEED CONTROL (SEE SHEET A6.0)
ENTRY LOBBY	01A	EXIST'G	S.S.	-	3'-0"	7'-0"	1-3/4"	S.S.	-	-	-	-	-	EXISTING ADA ENTRANCE DOOR, KEY FOB
MAIN LOBBY	02	G	AL/GL	CLEAR	7'-0"	7'-8"	1-3/4"	AL	CLEAR ANOD	2/A0.4	3/A0.4	3/A0.4	1	SINGLE SLIDE WITH TRANSOM, KEY FOB ACCESS & TIMING CIRCUIT
STAIR #1	03A	EXIST'G	MTL	PT	3'-0"	7'-0"	1-3/4"	H.M.	PT	-	-	-	-	EXISTING "B" LABEL DOOR & FRAME (NO WORK)
STAIR #2	03B	EXIST'G	MTL	PT	3'-0"	7'-0"	1-3/4"	H.M.	PT	-	-	-	-	EXISTING "B" LABEL DOOR & FRAME (NO WORK)
STORAGE	05	EXIST'G	S.C. WD	PT	(2)2'-6"	6'-8"	1-3/4"	H.M.	PT	-	-	-	-	EXISTING DOORS, FRAME & HARDWARE
STORAGE	09	F	S.C. WD	PT	(2)2'-6"	7'-0"	1-3/4"	H.M.	PT	5/A0.4	4/A0.4	4/A0.4	6	
HUDDLE	10	C	S.C. WD	PT	3'-0"	7'-0"	1-3/4"	H.M.	PT	5/A0.4	4/A0.4	4/A0.4	7	ELECT STRIKE & KEY FOB W/TIMING CIRCUIT
COMMUNITY EXTERIOR	11	EXIST'G	S.S.	-	3'-0"	7'-0"	1-3/4"	S.S.	-	-	-	-	-	EXISTING DOORS, FRAME & HARDWARE
FITNESS	13	E	MTL/GL	PT	3'-0"	7'-0"	1-3/4"	H.M.	PT	5/A0.4	4/A0.4	4/A0.4	7	FULL GLASS LITE, ELECT STRIKE & KEY FOB W/ TIMING CIRCUIT
OFFICE	14	C	S.C. WD	CLEAR	3'-0"	7'-0"	1-3/4"	AL	CLEAR ANOD	5/A0.4	4/A0.4	4/A0.4	5	ELECT STRIKE & KEY FOB W/TIMING CIRCUIT
OFFICE	15	A	S.C. WD	CLEAR	3'-0"	7'-0"	1-3/4"	H.M.	PT	5/A0.4	4/A0.4	4/A0.4	2	
COPY	16	I	S.C. WD	CLEAR	3'-0"	7'-0"	1-3/4"	WD	PT	5/A0.4	4/A0.4	4/A0.4	8	POCKET DOOR WITH PULLS
OFFICE	17	A	S.C. WD	CLEAR	3'-0"	7'-0"	1-3/4"	H.M.	PT	5/A0.4	4/A0.4	4/A0.4	2	
CONFERENCE	18	A	S.C. WD	CLEAR	3'-0"	7'-0"	1-3/4"	H.M.	PT	5/A0.4	4/A0.4	4/A0.4	2	FULL GLASS LITE
CORRIDOR	19	B	S.C. WD	PT	3'-0"	7'-0"	1-3/4"	H.M.	PT	5/A0.4	4/A0.4	4/A0.4	7	ELECT STRIKE & KEY FOB W/TIMING CIRCUIT
STORAGE	20	EXIST'G	S.C. WD	-	(2)2'-6"	6'-8"	1-3/4"	H.M.	PT	-	-	-	-	EXISTING DOORS, FRAME & HARDWARE
TOILET	22	B	S.C. WD	PT	(2)2'-6"	7'-0"	1-3/4"	H.M.	PT	5/A0.4	4/A0.4	4/A0.4	4	
TOILET	23	B	S.C. WD	PT	(2)2'-6"	7'-0"	1-3/4"	H.M.	PT	5/A0.4	4/A0.4	4/A0.4	4	
ENGINEER	25	D	S.C. WD	PT	3'-0"	7'-0"	1-3/4"	H.M.	PT	5/A0.4	4/A0.4	4/A0.4	7	ELECT STRIKE & KEY FOB W/TIMING CIRCUIT
CORRIDOR	26	D	MTL	PT	3'-0"	7'-0"	1-3/4"	H.M.	PT	5/A0.4	4/A0.4	4/A0.4	7	(FIRE RATED DOOR & FRAME) ELECT STRIKE & KEY FOB W/TIMING CIRCUIT
CORRIDOR	36	EXIST'G	MTL	PT	3'-8"	7'-0"	1-3/4"	H.M.	PT	-	-	-	-	EXISTING DOORS, FRAME & HARDWARE
STORAGE	37	EXIST'G	S.C. WD	PT	3'-0"	7'-0"	1-3/4"	H.M.	PT	-	-	-	-	EXISTING DOOR RELOCATED, NEW FRAME & HARDWARE
CORRIDOR	35	EXIST'G	MTL	PT	3'-8"	7'-0"	1-3/4"	H.M.	PT	-	-	-	-	EXISTING DOORS, FRAME, NEW ELECT STRIKE & KEY FOB W/TIMING CIRCUIT
CORRIDOR	29	EXIST'G	MTL	PT	(2)3'-0"	7'-0"	1-3/4"	H.M.	PT	-	-	-	-	EXISTING DOORS, FRAME, NEW ELECT STRIKE & KEY FOB W/TIMING CIRCUIT
CORRIDOR	43	EXIST'G	MTL	PT	(2)3'-0"	7'-0"	1-3/4"	H.M.	PT	-	-	-	-	EXISTING DOORS, FRAME, NEW ELECT STRIKE & KEY FOB W/TIMING CIRCUIT

**1 SCHEMATIC ELEVATION - ALUMINUM STOREFRONT SYSTEM**  
A0.3 SCALE: N.T.S.



**DOOR TYPES**



**TYPICAL MOUNTING HEIGHTS ELEVATION**  
SCALE: 1/4"=1'-0"

EXPIRES 11-30-2018

I hereby certify that these plans were prepared under my supervision and that I am a duly licensed professional engineer in the State of Illinois, with all the building codes and ordinances of the city of Chicago, Ill.

NO.	DATE	DESCRIPTION
1	10/06/17	BACKGROUND
2	02/23/18	ISSUE FOR BID
3	03/30/18	ISSUE FOR PERMIT

**A. WILLIAM SEEGER ARCHITECTS**  
Chicago, Illinois 60681  
117 North Jefferson St., Suite LL3B  
Phone 312-454-0999  
E-mail AWSseegers@gmail.com

Drawing Title:  
**1st Floor Upgrade Repairs**  
2101 S. Michigan Avenue  
Chicago, IL

DESCRIPTION:  
**Schedules**  
JOB NO. 1701  
DRAWN BY: AWS  
CHECKED BY: AWS  
DATE: 10-06-17  
SHEET NO.

**A0.3**